

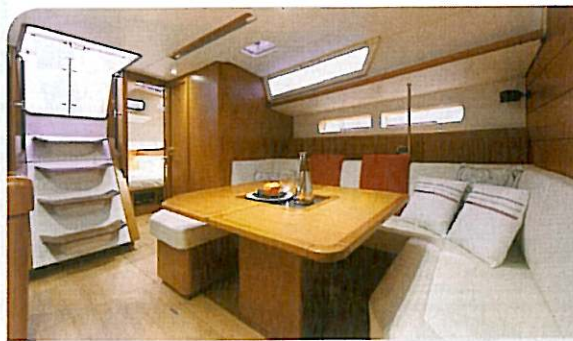


Sun Odyssey 469

The latest 2013 addition to the Sun Odyssey range is no small addition. The Sun Odyssey 469 by famed designer Philippe Briand benefits from the latest innovations and inherits the finest traits of this iconic line. Clean lines and an elongated hull with moderate freeboard give the Sun Odyssey 469 an extraordinary aesthetic value and performance. The perfect blend of comfort and ease of handling, the Sun Odyssey 469 proves both responsive and stable. A unique single level concept exists throughout the interior extending to the cockpit and allowing for easy movement everywhere.

Bathed in light, the interior affords the volume and comfort typically found on a much larger boat. The Sun Odyssey has two huge cabins aft with either one or two heads, as well as a wonderful center-line owner's cabin forward. For those needing more accommodation, two additional cabins with two heads forward are available. The salon is quite spacious with seating for eight, and a unique navigation station that drops down to become an additional berth when needed.

Whatever your destination may be, she will deliver uncompromising comfort with unforgettable cruising performance.



SPECS

LOA 46ft 1in
LWL 41ft 1in
BEAM 14ft 8in
DRAFT 7ft 4in
DISPLACEMENT 23,839 lbs
BALLAST 6,967 lbs
SAIL AREA 1,033 ft ²
FUEL/WATER/WASTE (US GAL) 63/162/21
ENGINE Yanmar 54 Cv / 40 Kw
ELECTRICAL 12V
DESIGNER Philippe Briand
BUILDER Jeanneau
U.S. DISTRIBUTOR jeanneau.com